

High-performance top motor mount
NC rotary table

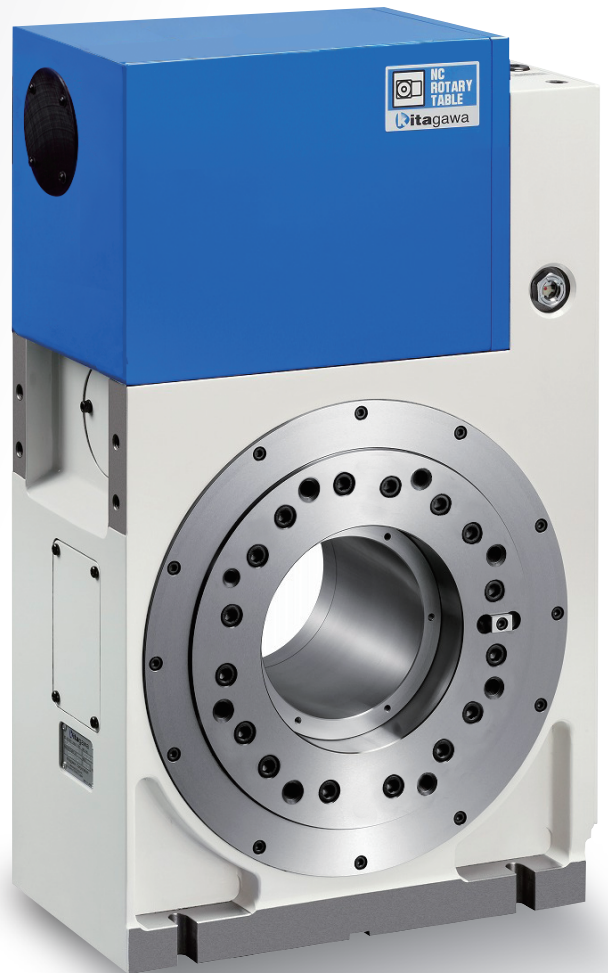
TUS400

Ideal for horizontal machining centres
Significant performance improvement

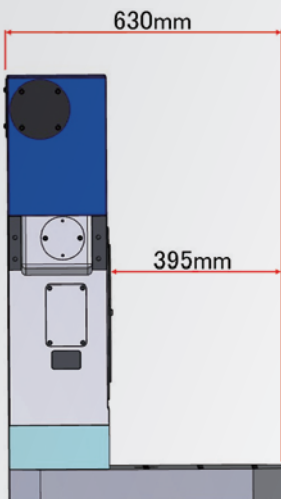
High clamping torque

Largest in its class,
7000N·m (Hyd. press. 3.5MPa)

Lightweight and compact
Space efficient mounting



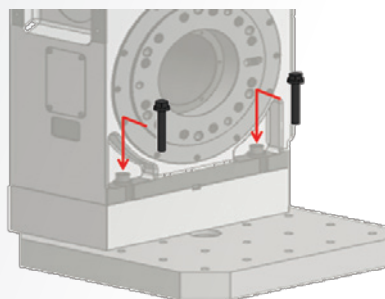
Directly fixing with bolts from above,
this does not require clamping devices.



*The figure shows an example of installation on a □630 table.

Compared to conventional model

15% lighter
27% thinner



Abundant options

It supports a wide variety of rotary joints that can be selected according to the jig design. It also supports high-precision indexing such as MP scale and rotary encoder. Also optional $\Phi 400$ face plate with T-slots is available.

Abundant lineup of rotary joints

| Number of ports | Max.working pressure |
|-----------------|----------------------|
| 6 ports | 7MPa |
| 6+1 ports | 7MPa |
| 8 ports | 7MPa |
| 10+1 ports | 25MPa |
| 12+1 ports | 7MPa |

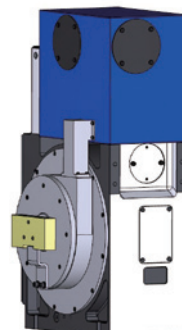
The +1 port is the $\phi 12.5$ multi-purpose hole.

Used with MP scale

| | |
|---------|------|
| 6 ports | 7MPa |
| 8 ports | 7MPa |

Used with rotary encoder

| | |
|---------|------|
| 6 ports | 7MPa |
|---------|------|



The figure shows an image of the rotary encoder and rotary joint installed.

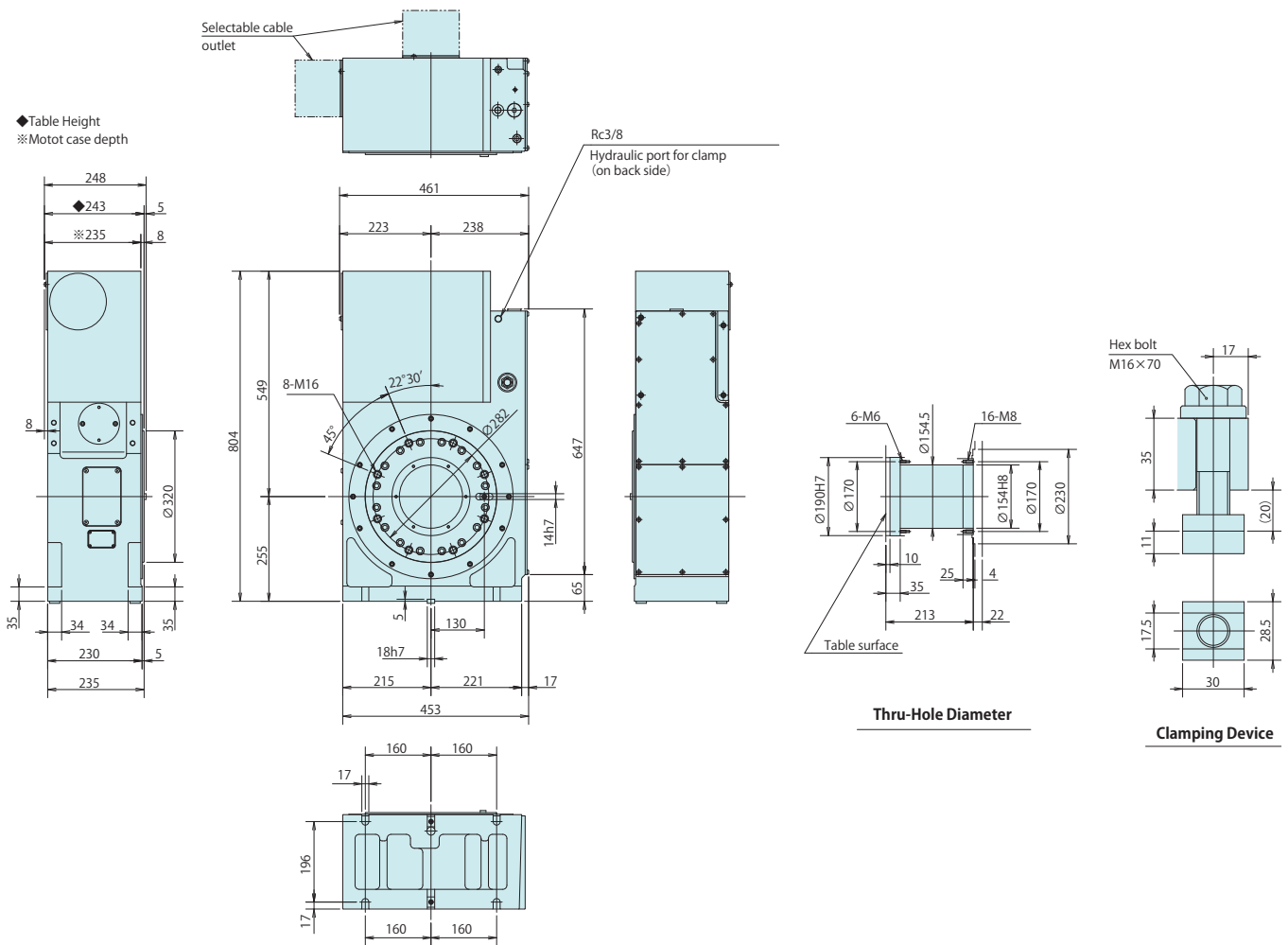
Specifications

| Table dia mm | Face plate (Option) | Centre hole dia. mm | Through hole dia. mm | Centre height mm | Clamping method | Clamping torque N·m | Motor Axis Reduced Inertia kg·m ² | Servomotor | Total Reduction Ratio |
|--------------------------------------|--|-----------------------|----------------------|--------------------|--------------------------------|------------------------------|--|--------------------------------|-----------------------|
| φ 320 | φ 400 with T-slots | φ 190H7 | φ 154 | 255 | Air-hydraulic /hydraulic | 7000 | 0.00647 (Fanuc spec.) | α iF12/4000-B α iF22/3000-B | 1/90 |
| Max. spindle Speed min ⁻¹ | Allowable Work Inertia kg·m ² | Indexing Accuracy sec | Repeatability sec | Mass of Product kg | Allowable mass of workpiece kg | Allowable cutting torque N·m | Built-in Rotary Joint (Option) | | |
| 22.2 (Motor 2000min ⁻¹) | 5.00 | 20 | 4 | 300 | 250 | 1700 | 6P 6P+1P 8P | *10P+1P 12P+1P | |

Dimensions (4th axis spec.)

Note 1) The +1 port is a φ 12.5 multi-purpose hole. It can be used for pneumatic, hydraulic, coolant, cable laying of work seating confirmation sensor, etc. Please tell the sales staff about the purpose of the multi-purpose hole when making inquiries.

Note 2) * 10P is compatible with high pressure 25MPa.



For technical information and new product information, visit our web showroom.
<https://prod.kiw.co.jp/exhibition/mttools/en/>

kitagawa showroom | Q